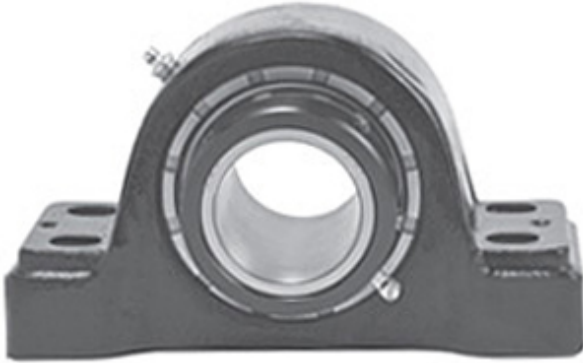




PVQ BEARINGS LIMITED

3.438 Inch | 87.325 Millimeter x 4.375 Inch |
111.13 Millimeter x 3.75 Inch | 95.25 Millimeter
LINK BELT PKB22455FE7 Pillow Block Bearings



PKB22455FE7 Bearing 2D drawings and 3D CAD models

Bearing No. PKB22455FE7

Category	Pillow Block Bearings
Inventory	0.0
Manufacturer Name	REXNORD
Minimum Buy Quantity	N/A
Weight	21.34
EAN	0793699552669
Product Group	M06288
Number of Mounting Holes	4
Mounting Method	Concentric Collar
Housing Style	4 Bolt Pillow Block
Rolling Element	Spherical Roller Bearing
Housing Material	Cast Steel
Expansion / Non-expansion	Non-expansion
Mounting Bolts	3/4 Inch
Relubricatable	Yes
Insert Part Number	B22455E7L
Seals	Triple Lip Contact
Housing Configuration	1 Piece Solid
Inch - Metric	Inch
Other Features	Double Row Single Collar Extended Inner Race With Set Screw
Long Description	4 Bolt Pillow Block; 3-7/16" Bore; 3-3/4" Base to Center Height; Concentric Collar Mount; Spherical Roller



PVQ BEARINGS LIMITED

	Bearing; Relubricatable; Cast Steel; Triple Lip Contact; Non-expansion
Category	Pillow Block
UNSPSC	31171511
Harmonized Tariff Code	8483.20.40.80
Noun	Bearing
Keyword String	Pillow Block
Manufacturer URL	http://www.rexnord.com
Manufacturer Item Number	PKB22455FE7
Manufacturer Internal Number	0155266
Weight / LBS	47
Nominal Bolt Center to Center	10 Inch 254 Millimeter
D	4.375 Inch 111.13 Millimeter
Bolt Spacing Minimum	0 Inch 0Millimeter
Bolt Spacing Maximum	0 Inch 0Millimeter
d	3.438 Inch 87.325 Millimeter
Actual Bolt Center to Center	10 Inch 254Millimeter
B	3.75 Inch 95.25 Millimeter